

Trombone 2

Joe's Last (re)Mix

for electric winds

Robert McCarthy

Tanner Menard

$\text{♩} = 108$

loops][layers

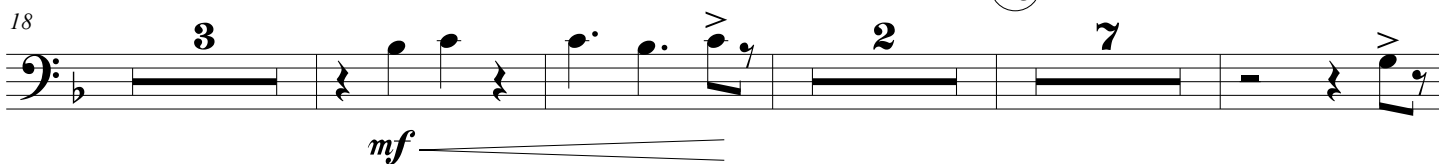
(9)



mf

mf

18



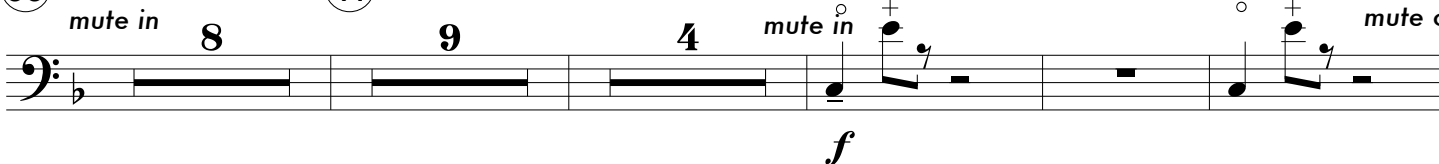
mf

(25)

(33)

mute in

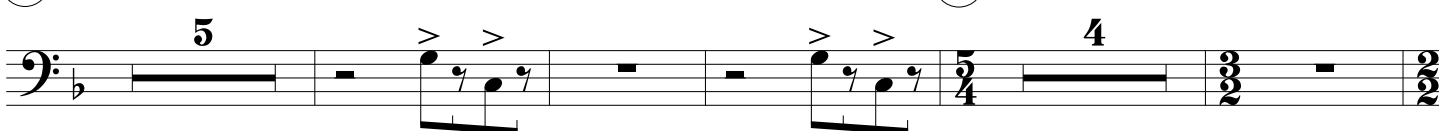
(41)



f

mute out

(57)



(65)

70



f

ff

(72)

76

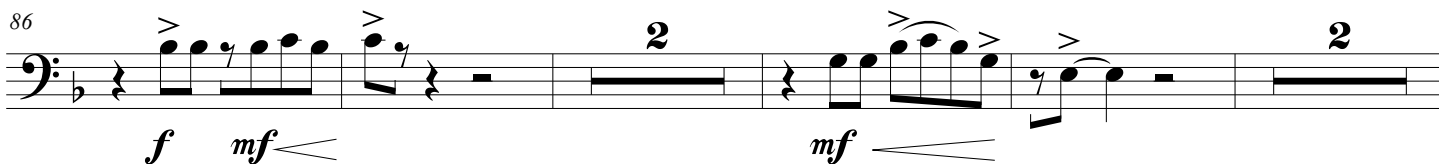


fp

song][dance

(83)

86



f

mf

mf

(re)Mix - 2010 Robert McCarthy www.asiab3.com

Source - 2000 Tanner Menard www.tannermenard.archaichorizon.com

Distributed under CC Attribution-Noncommercial-Share Alike 3.0 United States

Joe's Last (re)Mix

94

mf *f*

(101) (109)

100

8 4

mf

117

11

f *ff*

133

mf

(139) (147)

2 4

f

150

4

f *ff*

(155)

158

mf *f* *ff*

(161)

165

waves][echos

5

(175)

f

176

183

fp *f*

2

Detailed description: This musical staff covers measures 176 to 183. It begins with a bass clef and a key signature of one flat. Measures 176-180 contain eighth notes with accents, followed by a half note. Measures 181-183 are whole rests. A crescendo hairpin starts at measure 176 and ends at measure 180. A decrescendo hairpin starts at measure 181 and ends at measure 183. A double bar line with a repeat sign is at the end of measure 183. A circled measure number 189 is located above the staff.

184

191

fp *f*

Detailed description: This musical staff covers measures 184 to 191. It begins with a bass clef and a key signature of one flat. Measures 184-188 contain eighth notes with accents, followed by a half note. Measures 189-191 are whole rests. A crescendo hairpin starts at measure 184 and ends at measure 188. A decrescendo hairpin starts at measure 189 and ends at measure 191. A double bar line with a repeat sign is at the end of measure 191.

192

200

ff

Detailed description: This musical staff covers measures 192 to 200. It begins with a bass clef and a key signature of one flat. Measures 192-195 contain eighth notes with accents, followed by a half note. Measures 196-200 are whole rests. A crescendo hairpin starts at measure 192 and ends at measure 195. A decrescendo hairpin starts at measure 196 and ends at measure 200. A double bar line with a repeat sign is at the end of measure 200.

200

207

ff

Detailed description: This musical staff covers measures 200 to 207. It begins with a bass clef and a key signature of one flat. Measures 200-203 are whole rests. Measures 204-207 contain eighth notes with accents, followed by a half note. A decrescendo hairpin starts at measure 204 and ends at measure 207. A double bar line with a repeat sign is at the end of measure 207.